

Main Characteristics

Axial subminiature fuse; Quick-Acting (F)

Standard

IEC-60127-

3/III Materials

- Tube: Ceramic Tube
- End Caps: Nickel plated brass
- Axial Leads: Nickel plated caps
Tin plated copper

wires Operating Temperature

-55°C to +125°C

Storage Conditions

- +10°C to +60°C
- Relative humidity: ≤75% yearly average
- Without dew, maximum 30 days at 95%

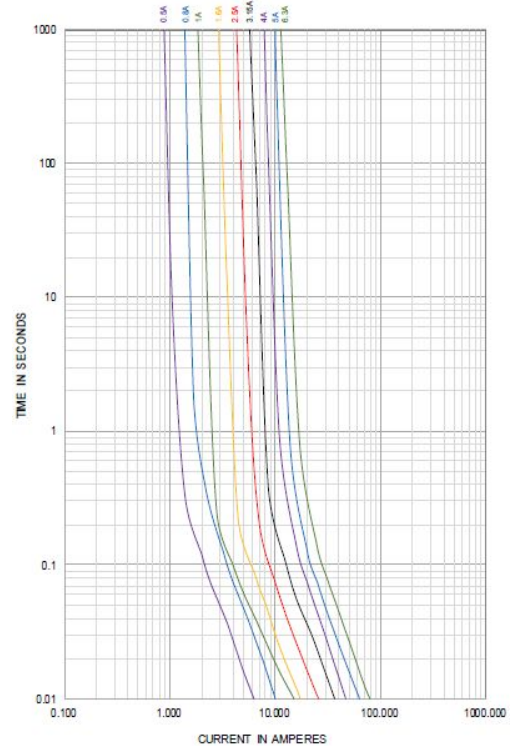
Vibration Resistance

- 24 cycles at 15 min. each (60068-6)
- 10-60Hz at 0.75mm amplitude
- 60-2000Hz at 10g acceleration

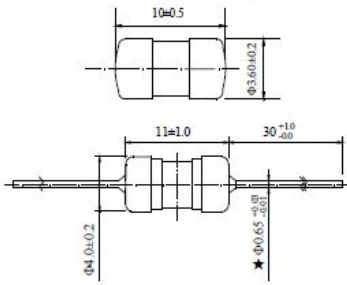
Soldering Parameters

- 260°C. ≤5 sec (Wave Soldering)
- 350°C. ≤3 sec (Hand Soldering)
- Soldering Peak:
260°C. 10 sec. (IEC 60068-20)

Average Time Current(I-T Curve)



Dimensions (unit in mm)



- ★ 250mA~7A: Φ0.65mm
- 8A~10A: Φ0.80mm

Rated Current	150%	210%	275%	400%	1000%
250mA~10A	>1h	<30min	10ms~3s	3ms~300ms	≤20ms



Amp Code	Rated Current	Max. Voltage	Max. Voltage drop (mV)	Max. Power Dissipation (mW)	Nominal Melting I ² t(A ² sec)	Breaking Capacity	Approvals		
							TUV	CQC	cULus
0250	250mA	250V AC	440	289	0.093	50A@125V AC 35A or 10In@250VAC Cosφ=1.0	○	○	●
0300	300mA		420	331	0.131		○	○	●
0315	315mA		400	331	0.152		○	○	●
0350	350mA		390	331	0.172		○	○	●
0375	375mA		380	389	0.203		○	○	●
0400	400mA		370	389	0.23		○	○	●
0500	500mA		350	459	0.384		○	○	●
0630	630mA		320	529	0.656		○	○	●
0750	750mA		310	630	0.941		○	○	●
0800	800mA		300	630	1.00		○	○	●
1100	1.00A		280	375	2.25		○	○	●
1125	1.25A		280	919	2.57		○	○	●
1150	1.50A		250	1050	2.77		○	○	●
1160	1.60A		250	1050	2.89		○	○	●
1200	2.00A		240	1260	2.25		●	○	●
1250	2.50A		200	1313	6.75		○	○	●
1300	3.00A		180	1488	12.86		○	○	●
1315	3.15A		180	1488	13.69		○	○	●
1350	3.50A		170	1488	16.05		○	○	●
1400	4.00A		160	1680	22.09		○	○	●
1500	5.00A		150	1969	39.69		○	○	●
1630	6.30A	150	1969	62.41	●	○	●		
1700	7.00A	150	1969	72.25	○	○	●		
1800	8.00A	150	1969	92.16	○	○	●		
2100	10.00A	150	1969	156.3	50A@125V AC Cosφ=1.0 50A@250V AC Cosφ=1.0	○	○	●	

Note: (1) Permissible continuous operating current is ≤100% at ambient temperature of 23°C (73.4°F)
 (2) The cULus certification by 125V and 250V; the others certification by 250V.